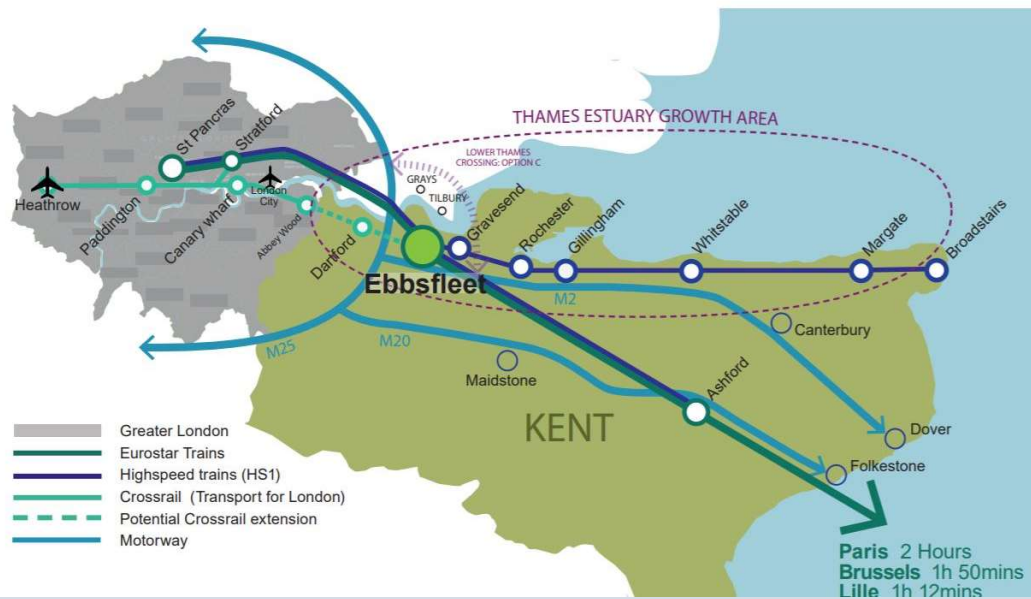




EBBSFLEET GARDEN CITY

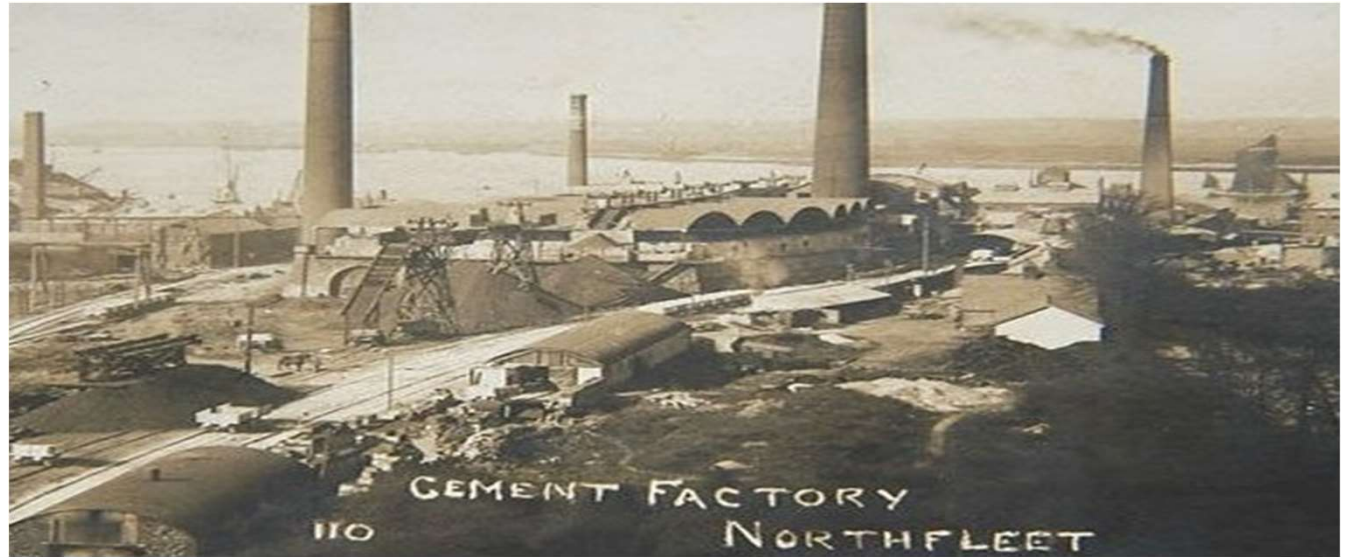




Located just off the M25 and A2, and linked to London on the High Speed rail line in 18 minutes, and Paris in 2 hours.

An Implementation Framework was launched in 2016, it binds together a set of separate outline planning applications, into a new cohesive place.





From this.....



To this.....

Ebbfleet Development Corporation was set up in April 2015 under the Local Government, Planning and Land Act 1980.

Objective “to regenerate the designated area”

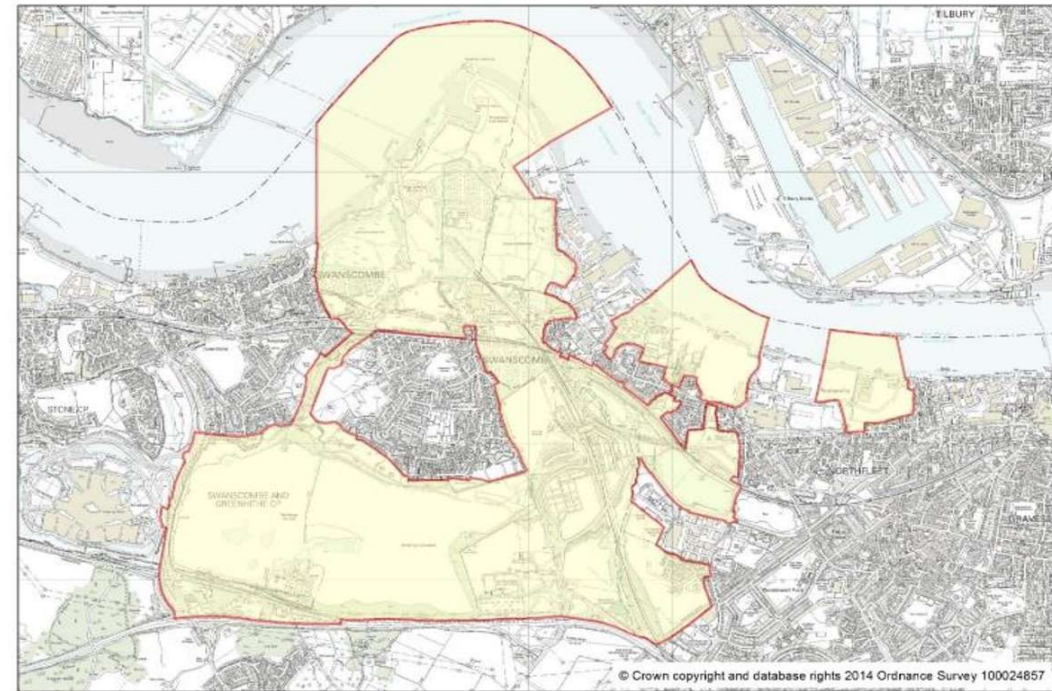
Designated as the Local Planning Area for Development Management, not Plan Making.

Investment comes directly from the Exchequer via DLUHC.

We are accountable to the Secretary of State.

As Accounting Officer, the Chief Executive is accountable to Parliament for the use of public money.

The Urban Development Area

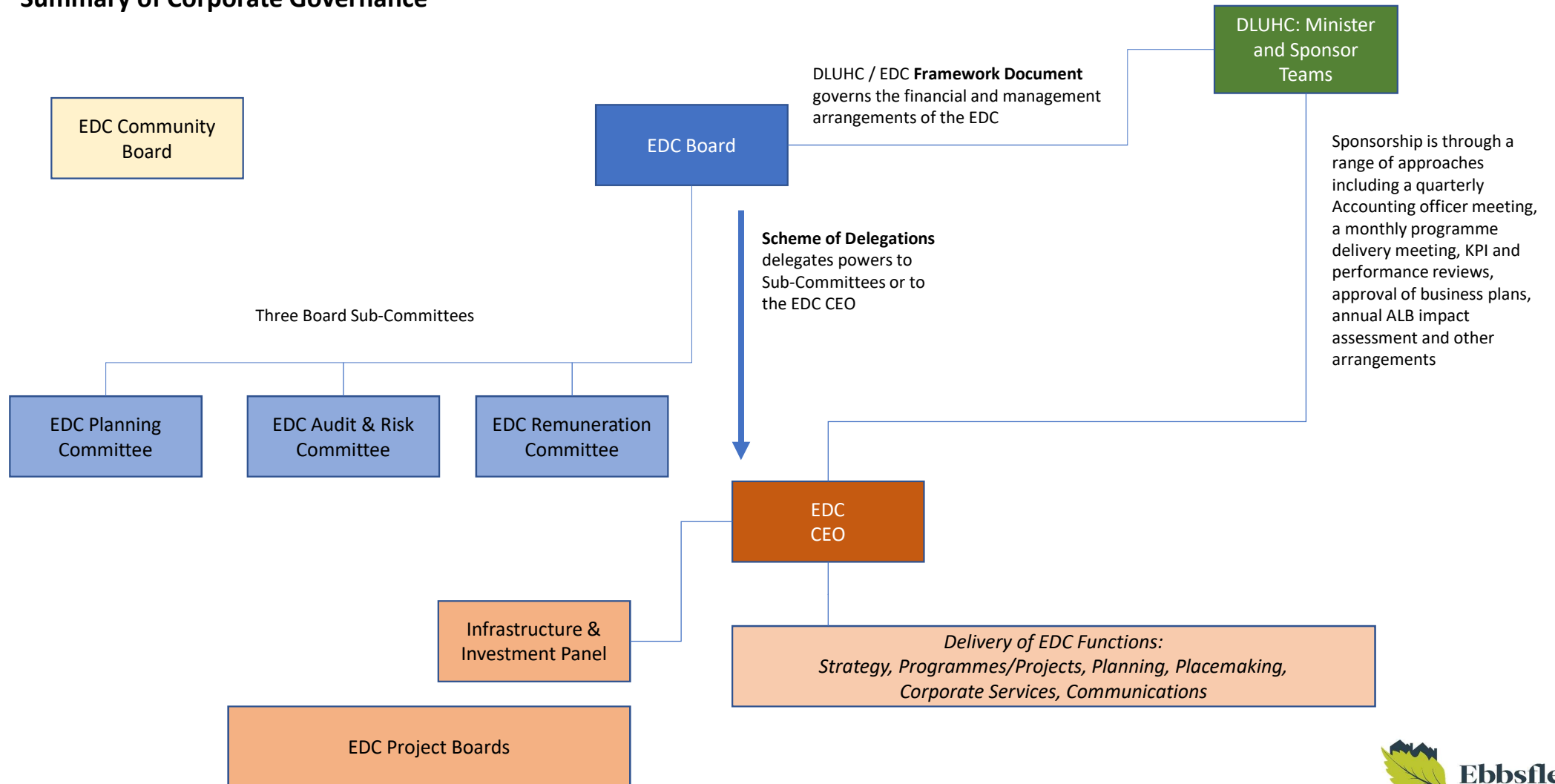


The Ambition...

- Building 15,000 new homes of all tenures... and a lot more;
- Seven new city parks and a network of green corridors;
- New public transport network;
- Up to 30,000 new jobs
- Major health and education campus;
- A vibrant new town centre built around Ebbsfleet International station;
- Three Enterprise Zone sites (as part of North Kent Enterprise Zone)



Ebbsfleet Development Corporation: Summary of Corporate Governance



Ministers/Sponsor Department

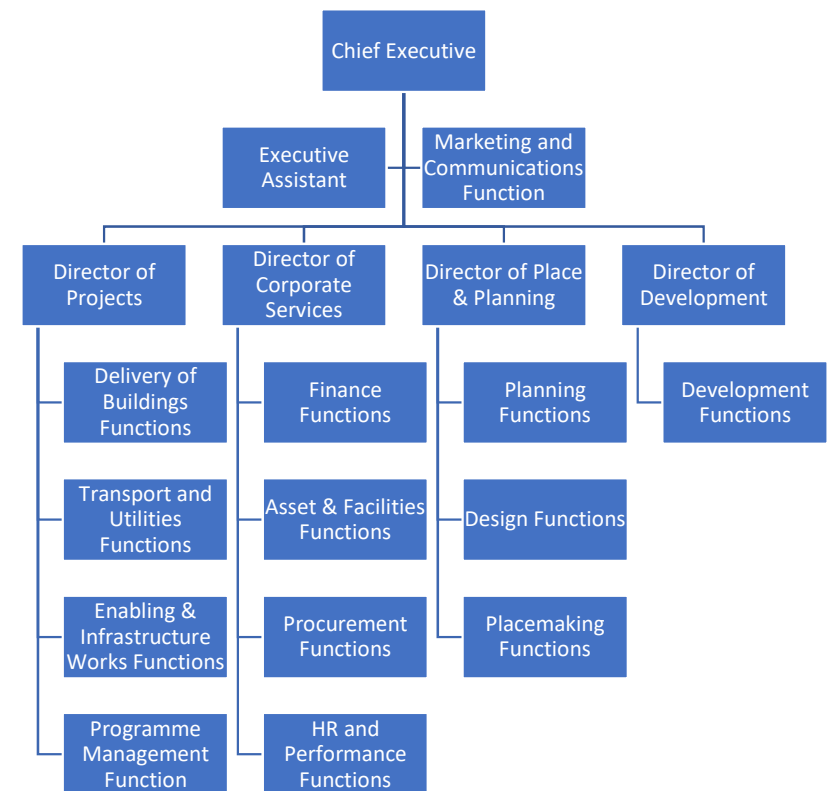
- Set the strategic priorities, policy context;
- Approve 3-5 year Corporate Plan & 1 year Annual Business Plan;
- Agree financial allocations;
- Appoint Board members and Planning Committee members;
- Approve Business Cases for project spend above £10m

The Board

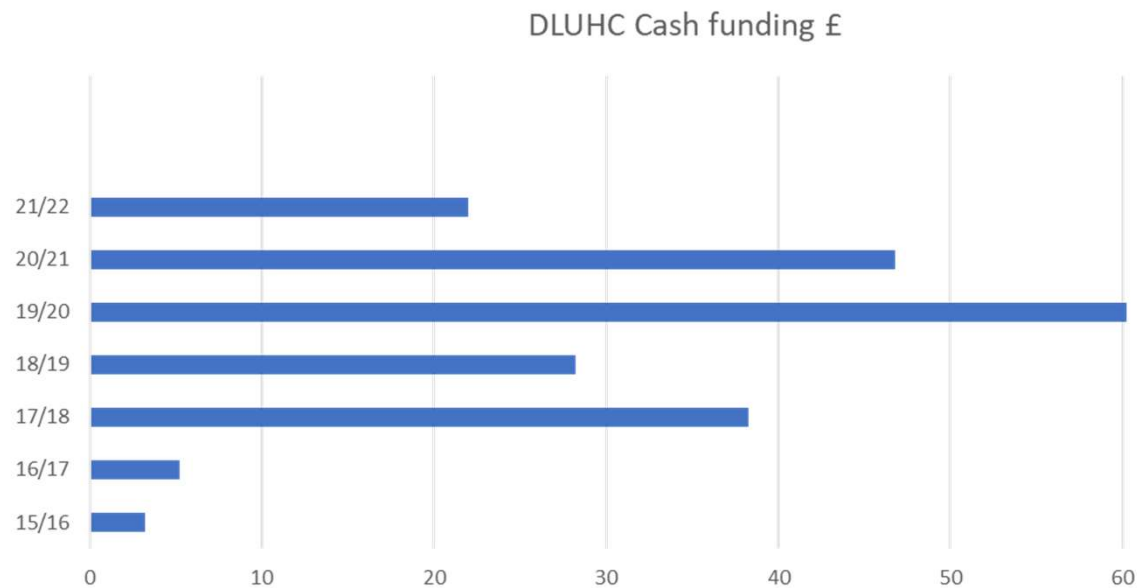
- Comprises non-execs with expertise in place-making, commercial property, town planning, project management, regeneration plus nominees of the 3 councils, 2 districts and the County;
- Responsible for strategic oversight, and financial decisions not delegated to the CEO;
- Agree the Corporate Plan and Business Plan

The Executive

- The CEO is the Accounting Officer and holds all the formal responsibilities for compliance etc.
- Currently c.50 staff (c.£3.6m per annum)
 - Planning Function – 14
 - Finance and Corporate Services – 13
 - Placemaking and Design – 9
 - Development and Projects - 14



Finance....so far....



- Nearly £204m in total
- Revenue - £40m
- Capital - £164m

Delivery Vehicles - Set Up For Success

- ✓ Specialist, focussed expertise
- ✓ The right sort of Independence
- ✓ The right sort of 'control'
- ✓ Control comes in many forms – beware!!
- ✓ Set ambitious but realistic expectations – regeneration takes time, patience, and expertise
- ✓ Try to provide a long term (5-10 year) funding envelope
- ✓ Go on the journey together – remember, it is your vehicle, set up by you, to achieve your vision